



# NGX Storage

**Presented by :**

• Beyhan Çalışkan, CEO



Press Kit

# NGX Storage: Reimagining Enterprise Data Storage

Founded in 2015, our company was built on a simple idea:

Data storage should be powerful, flexible, and easy to manage across every protocol.

Today we deliver a unified storage platform that seamlessly supports NAS, SAN, and Object storage, enabling organizations to manage rapidly growing data with exceptional performance and simplicity.



## Our Global Presence

- Headquarters in Türkiye, Europe
- Advanced R&D centers in India
- Operations spanning 4 continents



## Market Focus

- **Primary:** Enterprise external storage
- **Secondary:** Archive and backup infrastructure



## Our Mission

To simplify how organizations store, scale, and protect data in a world of exponential data growth.



---

# NGX Storage Technology Ecosystem

---



veeam

vmware



KIOXIA



openstack.



The Power Behind the Storage

Western Digital

TOSHIBA

A low-angle photograph of a modern glass skyscraper against a clear blue sky. The building's facade is highly reflective, showing distorted reflections of the sky and surrounding environment.

# Customer Profile

**99% of NGX Storage customers are enterprise organisations.**

NGX Storage supports organisations operating data-intensive infrastructure across multiple sectors:

- Media & Entertainment
- Oil & Gas
- Defence & Military
- Video Surveillance
- Large Private Enterprises
- Communication & Technology
- Finance & Banking
- Education & Research
- Healthcare
- Manufacturing

## Key Highlights

- Optimized for **AI, HPC, and data-intensive workloads** with microsecond latency and extreme throughput
- Can be deployed **on-premises or across cloud providers**
- **NO VENDOR LOCK - HARDWARE**
- Partnering with global OEM vendors
- Expanding Global Footprint: Poland, Spain, Malaysia , South Korea, UAE ...
- Developing 3th generation of our Unified Storage

# Future Technology & Global Expansion

We have successfully built and deployed a **high-performance, scale-out NVMe system**, available as **software-defined storage**.

This platform is **production-ready and designed for global deployment**.

# The Challenge: Exploding Data & Complex Storage

- **Fragmented Storage Systems** across NAS, SAN, and object platforms
- **Operational Complexity** with multiple tools and infrastructures
- **Rising Infrastructure Costs** for performance, backup, and archiving
- **Growing Need for Data Protection and Scalability**

## The Result:

- Companies spend more time managing storage than using their data to innovate.
- Storage infrastructure has become too complex.

# Storage Complexity Meets the AI Era



## Emerging Challenges



### MASSIVE DATA ACCESS FOR AI WORKLOADS

Training and inference require fast access to enormous datasets.



### MASSIVE PARALLEL ACCESS

AI clusters require thousands of concurrent data streams.



### EXPLOSIVE GROWTH OF UNSTRUCTURED DATA

Images, video, sensors, and AI datasets are expanding faster than traditional systems can scale.



### NVME MICROSECOND PERFORMANCE

Modern infrastructure expects microsecond latency and extreme throughput.



***AI workloads require a new storage architecture; high-performance, and built for extreme data scale.***

# NGX Storage Portfolio



<b>UNIFIED HYBRID STORAGE</b>	<b>→</b>	<b>NGX-H</b>
<b>UNIFIED ALL-FLASH STORAGE</b>	<b>→</b>	<b>NGX-AFA</b>
<b>SCALE-OUT NVME</b>	<b>→</b>	<b>NGX EXASCALE</b>
<b>SCALE-OUT OBJECT</b>	<b>→</b>	<b>NGX HYPERIO</b>
<b>SCALE-OUT NAS</b>	<b>→</b>	<b>NGX-H AND NGX-AFA WITH PNFS</b>





# Our Approach



**COVERS MORE  
USE CASES**



**SIMPLIFIES  
INFRASTRUCTURE**



**PROVIDES FULL  
LIFECYCLE STORAGE**

**“We support data across its entire lifecycle -from high-performance AI workloads to long-term archive- within one ecosystem.”**



# PRODUCT FAMILY

## HYBRID STORAGE, NGX-H

- ✓ Dual Controller, Up to 38 PB raw capacity
- ✓ Fibre Channel, iSCSI, NFS, SMB, S3
- ✓ Up to 64 Gb/s FibreChannel Interfaces
- ✓ Up to 100 Gb/s Ethernet Interfaces
- ✓ SAS/NL-SAS HDD, SAS/NVMe SSD



# PRODUCT FAMILY



## ALL-FLASH ARRAY, NGX-AFA

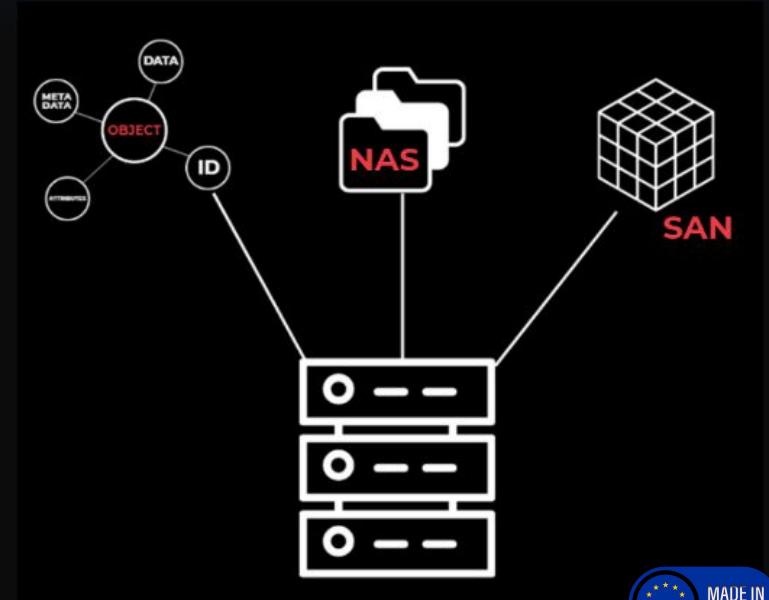
- ✓ Dual Controller, Up to 34 PB raw capacity
- ✓ Fibre Channel, iSCSI, NFS, SMB, S3
- ✓ Up to 64 Gb/s FibreChannel Interfaces
- ✓ Up to 100 Gb/s Ethernet Interfaces
- ✓ SAS/NVMe SSD



# GENERAL FEATURES



- ✓ User-friendly GUI
- ✓ Inline compression, deduplication
- ✓ Thin Provisioning
- ✓ Zero Detection
- ✓ RAID Levels (1,5,6,10,50,60, TP)
- ✓ Three-way mirror
- ✓ Four-way mirror

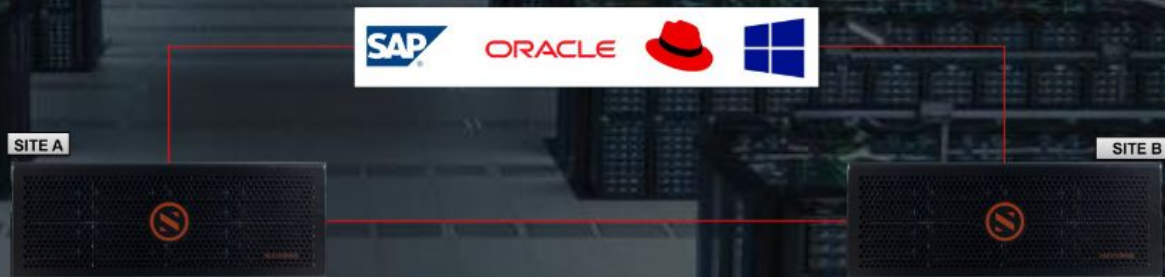


# METROSCALE CLUSTER



## ZERO RTO & RPO

- ✓ Active-Active Datacenter
- ✓ MetroCluster Stretch & MetroCluster IP



# USE CASES



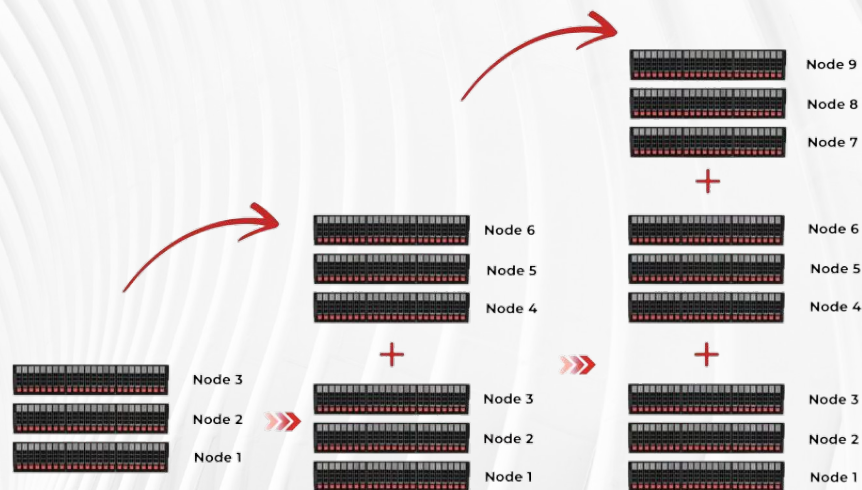
- Virtualization
- Database
- VDI
- CCTV
- HPC
- AI,ML,Big Data
- Backup + Archive
- Media and Entertainment
- Business Continuity and Disaster Recovery
- Cloud Providers (OpenStack, CloudStack, XEN)
- Log Analysis (Splunk, etc..)

# NGX ExaScale



## Why Scale-out NVMe Block?

- Ultra-low latency SSD access over PCIe (NVMe)
- NVMe-oF with RDMA/TCP transport
- Capacity scaling increases IOPS, throughput, and client connections
- Scales to tens of PB now, hundreds of PB in future releases
- Data-centre scale SDS architecture
- Reduced TCO
- Enables public and on-prem cloud deployments





# NGX HyperIO



## HARDWARE ARCHITECTURE

- High-density appliance nodes (24–60 drive configurations)
- Hot-swappable drives and power supplies
- Up to 200GbE connectivity options
- SSD/NVMe tier for metadata or performance hot tier
- Designed for high-availability racks and multi-rack clusters

## DURABILITY & PROTECTION

- Erasure coding and replication copy
- Geo-dispersed data protection
- Continuous background integrity checks and automated rebuilds

## CLUSTER & DATA SERVICES

- Scale-out cluster
- Distributed metadata services for fast indexing and object lookup
- Automatic load balancing and self-healing across nodes
- Bucket-level policies and multi-site replication

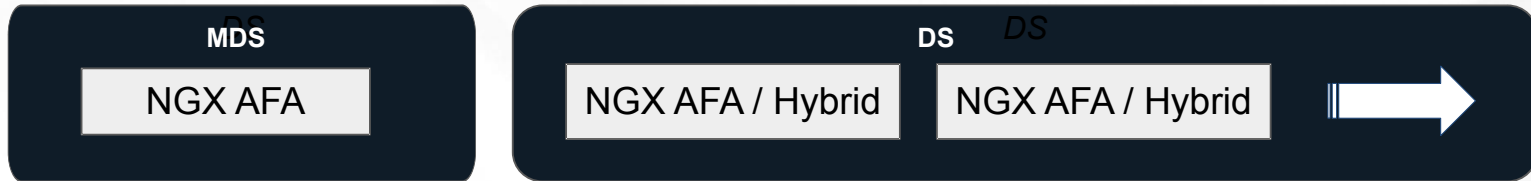
## PERFORMANCE

- Parallel object I/O across all cluster nodes
- Multi-stream ingest optimized for large objects and high-concurrency workloads
- High-throughput architecture ideal for analytics, backup, and streaming media
- Excellent performance for both small and large objects

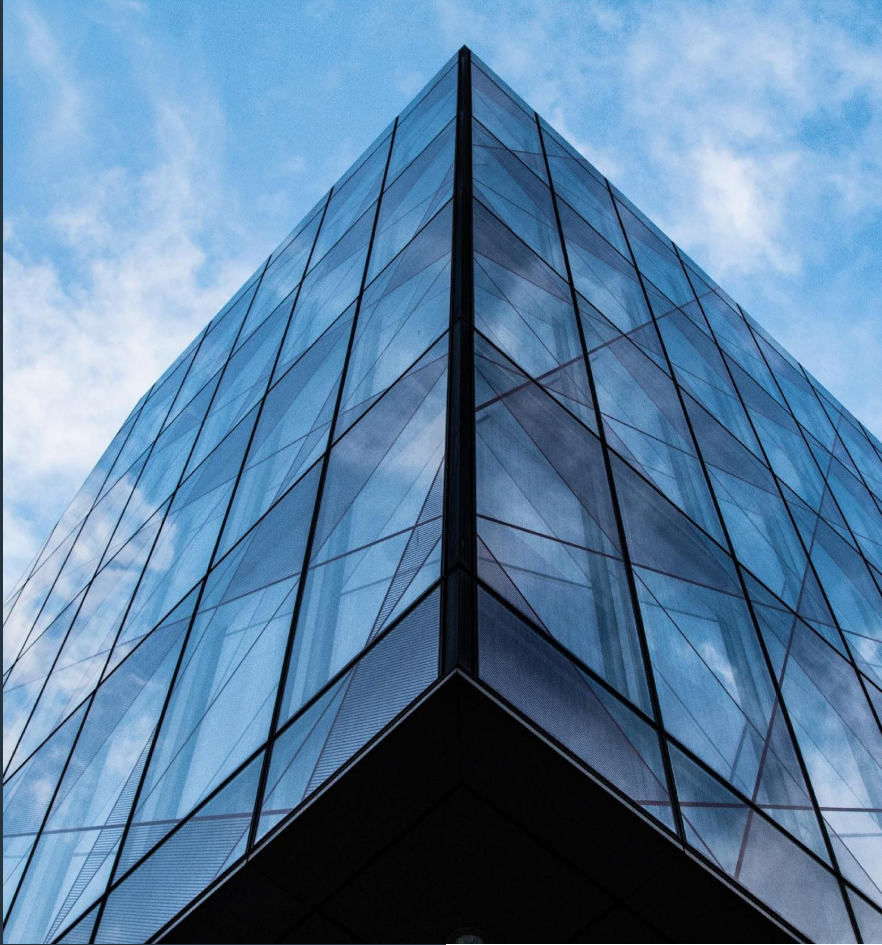


# SCALE-OUT-NAS

## { pNFS, SMB3, S3 }



- ✓ NVMe SCM for metadata
- ✓ Build on top of current HA architecture, NO EC or RAID cost over network
- ✓ All bandwidth for data service, supports 10Gbs to 200Gbs interfaces
- ✓ AI workloads, HPC, Data Lake
- ✓ Exabyte Scale



# Contact Us



+90 312 227 04 74



info@ngxstorage.com



www ngxstorage.com



Hacettepe Beytepe Kampüsü,



Hacettepe Teknokent Safir, C

Blok No:31, 06800

Çankaya/Ankara

